



Don J. Molter

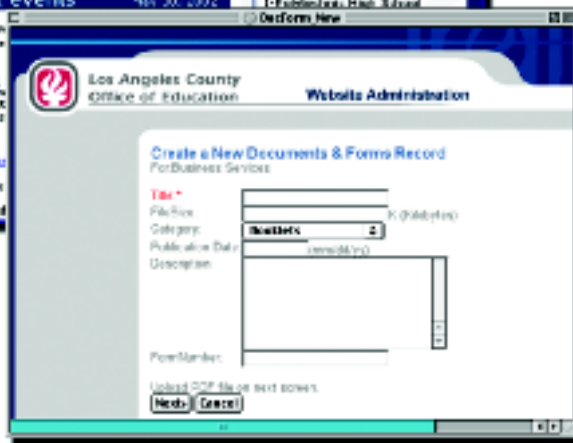
LACOE.edu— The SMART Web Portal

By Don J. Molter, Web Coordinator, LACOE WeXpress—a service of Network Application Services, division of Technology Services, Los Angeles County Office of Education



WEBXPRESS

LACOE.edu home page—
www.lacoe.edu. All visible page
content is routed on the fly from
SQL Server via Cold Fusion
Enterprise Server.



Fill in the blanks content edit screen
(for Documents & Forms Library) empowers
non-technical contributors.

instructional resources to parents and educators; supporting districts with mission-critical legislative and business resources; and empowering LACOE service providers to more effectively partner with their constituents.

LACOE.edu performs several key portal functions:

Unifies Agency Identity

LACOE.edu brings together the disparate scope of LACOE programs into a single, unified environment and keeps its Internet identity from fragmenting into multiple special interest “LACOE” Web sites.

Conserves Agency Resources

LACOE.edu is a turn-key, enterprise solution that frees individual programs from the need to acquire their own Web development and maintenance services.

Makes Agency Accessible 24/7

While the office shuts its doors for evenings, weekends, and holidays, LACOE.edu is hard at work 24 hours a day, 7 days a week.

Facilitates Agency Navigation

Consistent placement of powerful search and navigation tools on each Web site page ensures fast and intuitive navigation through the entire agency.

The Los Angeles County Office of Education (LACOE) is the nation’s largest regional educational agency, dedicated to promoting the achievement of the county’s 1.7 million public school students, 81 school districts, and 13 community college districts.

The LACOE.edu SMART Web Publishing System was developed by LACOE WebXpress to serve as the Office’s official portal Web site. LACOE.edu is the gateway to over 400 programs and services, delivering





SMART Technology

Since first establishing LACOE's Web presence in 1995, LACOE WebXpress grappled with the challenge of managing the ever-growing volume of publishable content generated by the office. After implementing with static HTML, it became obvious that a more powerful, dynamic solution would be required. Newly available database-driven technologies were introduced and steadily evolved until, in 2000, WebXpress re-engineered the LACOE Web site using dynamic database-driven technologies exclusively.

Unlike conventional Web sites that lock content into static, coded pages, the SMART System stores content in powerful Microsoft SQL Server databases. As pages are called, their content is routed *on the fly* from database to preformatted page templates.

SMART Advantages

The dynamic relationship between database and page display gives the SMART System several advantages over its static predecessors:

Fast, Flexible Updating

The SMART System empowers non-technical contributors to manage their own Web content by allowing database updates via simple online forms. This *fill in the blanks* editing environment allows program staff to focus on content, not technology, and eliminates the bottlenecks and delays associated with manual page reprogramming. Additionally, because database updates are managed via the Web browser, site updates can be accomplished anywhere—from home, office, or the convention floor.

Secure, Automated Approvals

The SMART System automates content approvals to ensure that all site content meets established publishing standards. Upon content creation or modification, System-generated e-mail messages alert those with approval authority. The automated workflow displays the content for review and,

upon approval, instantly publishes it to the public Web site. This feature greatly reduces managers' exposure to legal damages stemming from the publication of misleading, erroneous or libelous information; information that violates copyright law; or information that violates student confidentiality requirements. Manager-accessible "Hold" buttons allow undesirable content to be immediately withheld from public view.

Instant Activation

Whether just one Web site, or 100, is required to manage program content, the SMART system can immediately scale to meet the demand. Once activated, managers can power-up dozens of "content modules" (i.e., content-management applications) for each activated Web site. Adding a calendar module, for instance, is as simple as clicking the "Calendar" button in the site administration area.

Standard Content Modules:

- Program identity media
- Service overviews
- News and events
- Staff directories
- Strategic missions/goals
- Calendars/Auto-reminders
- FAQ's
- Organization maps
- Rate cards
- E-mail response forms
- Auto-send mail lists
- Document libraries
- Multimedia libraries
- Software libraries
- WebLink libraries
- eConference centers
- Course catalogs
- Online registration
- Dynamic driving directions/maps
- Data warehousing & re-purposing

Database technology allows services to build vast, online archives of mission critical assets—all searchable and instantly retrievable. The SMART system leverages the value of this stored program data by making it accessible from a variety of Internet ready devices—wireless PDA's, mobile phones, kiosks, etc. This flexible-access model allows programs to offer new ways of re-purposing program data without re-engineering core functionality.

Powerful Search Functions

SQL Server databases coupled with Cold Fusion's Verity search technology guarantee fast and efficient searches.

Future SMARTs

The SMART System's modular architecture allows new functionality to be developed and seamlessly integrated into System sites. One module currently under development—"myLACOE" Intranet—is a security layer that will allow managers to restrict site access to pre-selected LACOE audiences.

The SMART Web Publishing System has proven itself to be a flexible, efficient tool for managing the LACOE.edu portal, allowing WebXpress to say with confidence, "Get SMART; Stay SMART!" ■

CORE TECHNOLOGY

Web Server

Hardware

Device:	Compaq ProLiant ML530
CPU:	Dual Xeon 866 Mhz.
RAM:	2 Gb.
Capacity:	81 Gb.
Arrays:	RAID 1, RAID 5

Software

OS:	Windows NT 4.0
Web server:	Microsoft IIS 4.0
Middleware:	Cold Fusion Enterprise Server 4.5
Mail server:	Merak Mail 2.0
JAVA server:	JAVA Virtual Machine (supports text editor applet)
Map server:	MapQuest TripConnectPlus
Media server:	RealMedia G2 Streaming Server

Database Server

Hardware

Device:	Compaq ProLiant DL380
CPU:	Dual Xeon 733 Mhz.
RAM:	1.4 Gb.
Capacity:	120 Gb.
Arrays:	RAID 1, RAID 5

Software

OS:	Windows NT 4.0
DB server:	Microsoft SQL Server 7.0